

DEER RUN

A PORTION OF THE S.W. 1/4 OF SEC. 24, TWP. 26 N., RGE. 1 E., W.M.
KITSAP COUNTY, WASHINGTON

GERALD RICE
GREAT NORTHWEST SAVINGS AND LOAN
BREMERTON, WA.

NOTE: FENCES SHOWN HEREON ARE BASED ON FIELD LOCATIONS AND ATTEMPT HAS BEEN MADE TO CORRECT ANY DISCREPANCIES. FENCES SHOWN FROM RECORDS TO BOUNDARY LINES DO NOT NECESSARILY REFLECT IMPROVEMENTS.

THIS IS THE REMAINS OF AN OLD FENCE WHICH IS IN PART CORNERED AND PARTIALLY FALLING DOWN.



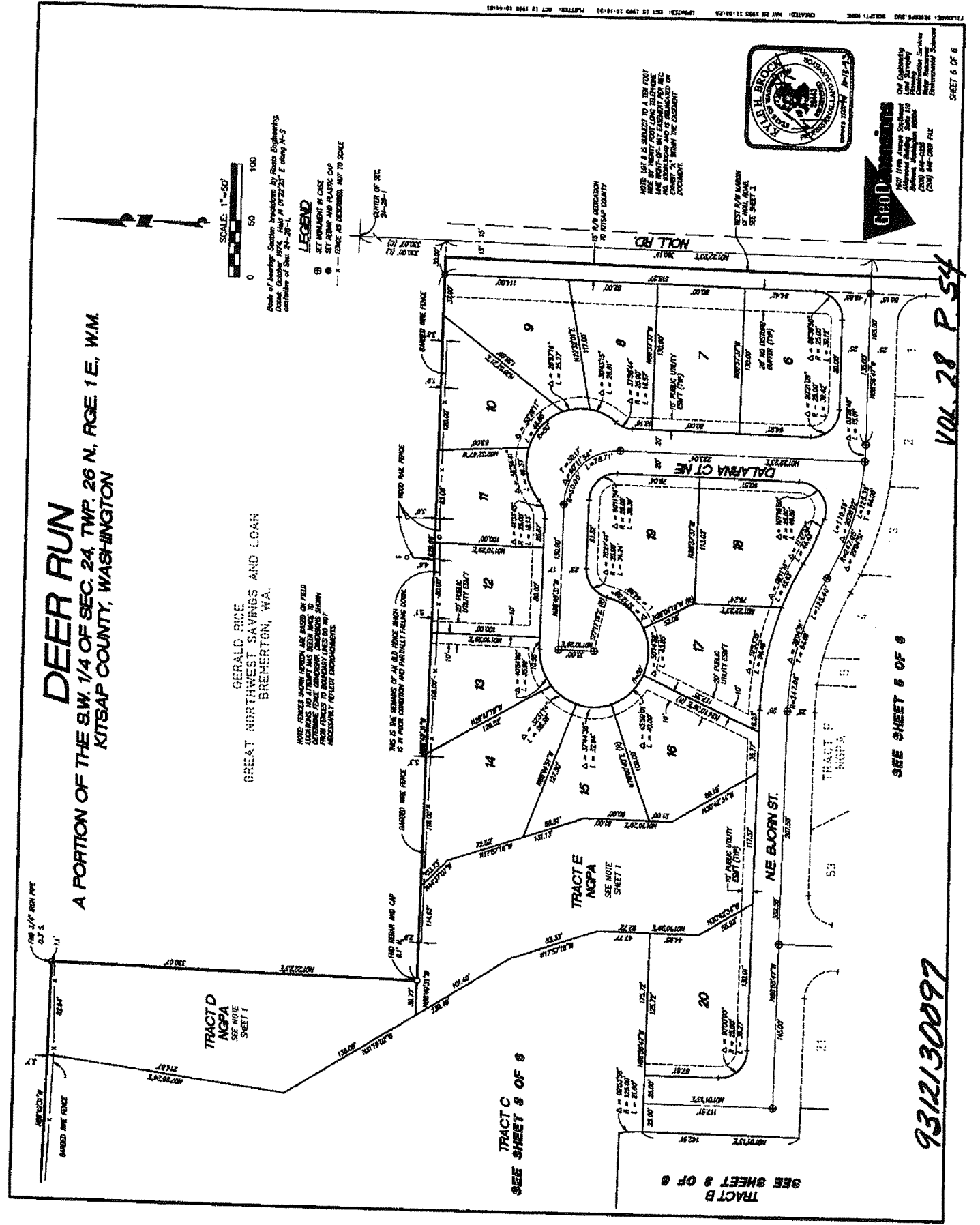
Date of Survey: Section 24, Township 26 North, Range 1 East, West Meridian, October 1974. Held At 01/22/2014 E. Casey A-C
Certificate of Sur. 24-25-1

- LEGEND**
- SET MONUMENT IN CASE
 - SET BENCH AND PLASTIC CAP
 - - - FENCE AS SHOWN, NOT TO SCALE



GeoDimensions
1001 1/2 Ave. Southeast
Burien, WA 98148
Phone: (206) 834-0222
Fax: (206) 846-0862 FAX

SHEET 6 OF 6



SEE SHEET 5 OF 6

TRACT C
SEE SHEET 5 OF 6

TRACT B
SEE SHEET 5 OF 6

9312130097

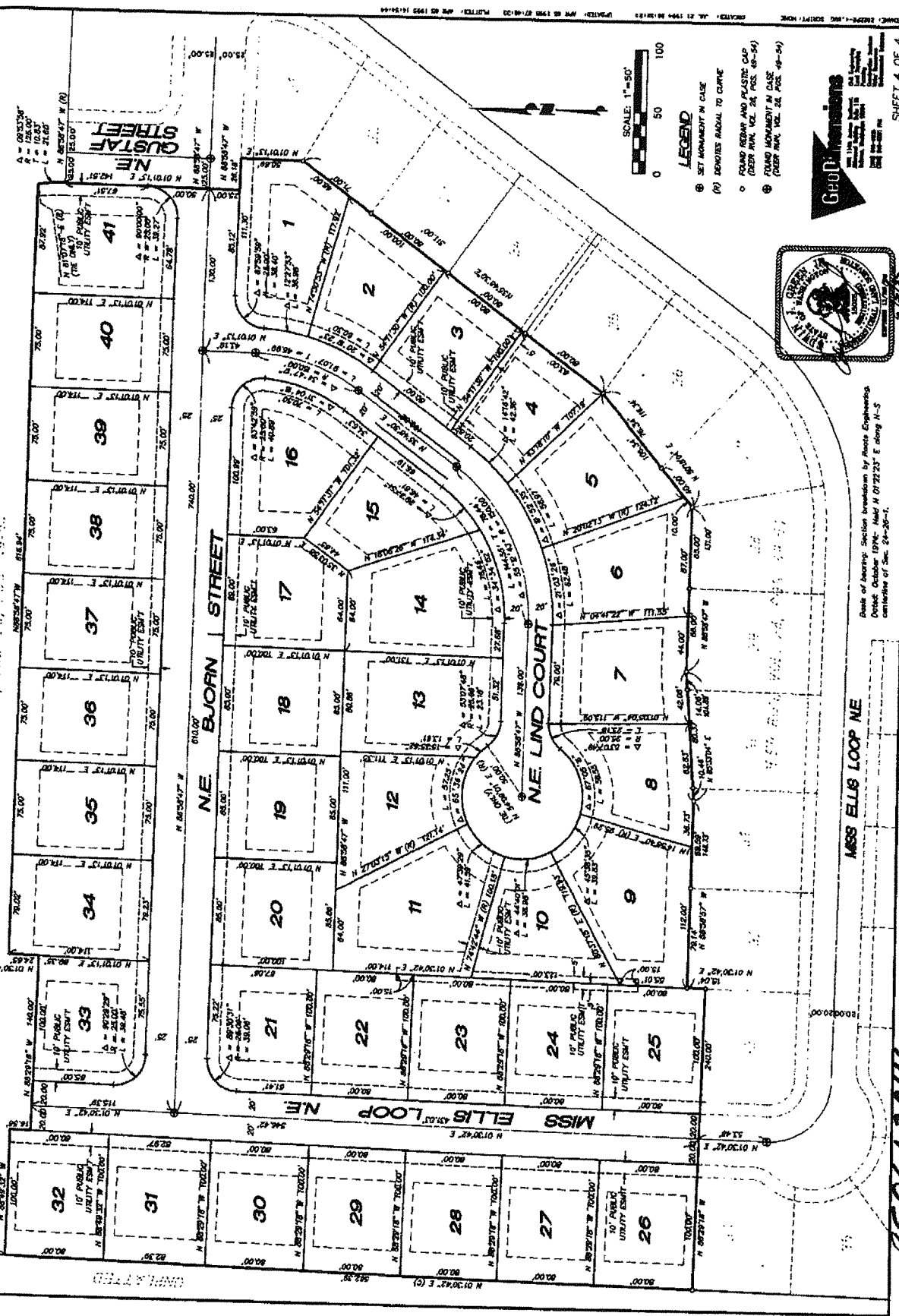
Vol. 28 P. 54

PLOTTED: OCT 13 1974 10:41:30 PLOTTED: OCT 13 1974 10:41:30

DEER RUN DIVISION 2

BEING A REPLAT OF TRACT 'B' OF DEER RUN, AS RECORDED IN VOLUME 28 OF PLATS, PAGES 49 THROUGH 54 RECORDS AND BEING A PORTION OF THE SW 1/4 OF SEC. 24, TWP. 26 N., RGE. 1 E., W.M. KITSAP COUNTY, WASHINGTON

TRACT 1
 DEER RUN, VOL. 28, PAGES 49-54



Geo. H. Johnson
 1000 1st Ave. S.E.
 Seattle, Wash. 98102
 Phone: 325-1111

Book of Survey: Section breakdown by Route Engineers.
 Dated: October 1974; Field N 01°22'25" E along N-S
 centerline of Sec. 24-26-1.

13016

V. 187.230

PLAY OF DEER RUN DIVISION 3

BEING A REPLAY OF TRACT "C" OF DEER RUN, AS RECORDED IN VOLUME 28 OF PLATS, PAGES 49 THROUGH 64 RECORDS OF KITSAP COUNTY, WASHINGTON

SITUATE IN THE SW 1/4, R14, REF 14 SECTION 24, TOWNSHIP 28 N, RANGE 1 E, W. 4 CITY OF POULSBORO, KITSAP COUNTY, WASHINGTON

10' PCD. ACCESS EASEMENT

15' UTILITIES EASEMENT

FOUND 1 1/4" DIA. PIPE MAY 1986

FOUND CONC. NON. WITH 30" OS SHELL OCT. 1974

EX 3/4" IRON PIPE SET PER "Geodimensions"

EX MONUMENT IN CASE BY "Geodimensions" DEER RUN DIVISION 2

NOTE ALL LOT CORNERS SET WITH 3/4" IRON PIPE AND 2" STAKE. A PK NAIL WAS SET IN THE TOP OF CURBING ON AN EXTENSION OF THE PROPERTY LINES FOR THE FRONT LOT CORNERS ON RIGHT OF WAY FRONTAGE.

FOR PREVENTION OF UTILITIES EASEMENT ADJACENT TO ALL DRIVEWAYS WITH UTILITY AND DRAINAGE EASEMENT FRONTAGE, MARK HAS ASSIGNED TO ALL INTERIOR LOT LINES SEE PAGE 2 OF 3.

15' UTILITIES EASEMENT

FOUND CONC. NON. WITH 30" OS SHELL OCT. 1974

EX 3/4" IRON PIPE SET PER "Geodimensions"

EX MONUMENT IN CASE BY "Geodimensions" DEER RUN DIVISION 2

NOTE ALL LOT CORNERS SET WITH 3/4" IRON PIPE AND 2" STAKE. A PK NAIL WAS SET IN THE TOP OF CURBING ON AN EXTENSION OF THE PROPERTY LINES FOR THE FRONT LOT CORNERS ON RIGHT OF WAY FRONTAGE.

FOR PREVENTION OF UTILITIES EASEMENT ADJACENT TO ALL DRIVEWAYS WITH UTILITY AND DRAINAGE EASEMENT FRONTAGE, MARK HAS ASSIGNED TO ALL INTERIOR LOT LINES SEE PAGE 2 OF 3.

15' UTILITIES EASEMENT

FOUND CONC. NON. WITH 30" OS SHELL OCT. 1974

EX 3/4" IRON PIPE SET PER "Geodimensions"

EX MONUMENT IN CASE BY "Geodimensions" DEER RUN DIVISION 2

NOTE ALL LOT CORNERS SET WITH 3/4" IRON PIPE AND 2" STAKE. A PK NAIL WAS SET IN THE TOP OF CURBING ON AN EXTENSION OF THE PROPERTY LINES FOR THE FRONT LOT CORNERS ON RIGHT OF WAY FRONTAGE.

FOR PREVENTION OF UTILITIES EASEMENT ADJACENT TO ALL DRIVEWAYS WITH UTILITY AND DRAINAGE EASEMENT FRONTAGE, MARK HAS ASSIGNED TO ALL INTERIOR LOT LINES SEE PAGE 2 OF 3.

15' UTILITIES EASEMENT

FOUND CONC. NON. WITH 30" OS SHELL OCT. 1974

EX 3/4" IRON PIPE SET PER "Geodimensions"

EX MONUMENT IN CASE BY "Geodimensions" DEER RUN DIVISION 2

NOTE ALL LOT CORNERS SET WITH 3/4" IRON PIPE AND 2" STAKE. A PK NAIL WAS SET IN THE TOP OF CURBING ON AN EXTENSION OF THE PROPERTY LINES FOR THE FRONT LOT CORNERS ON RIGHT OF WAY FRONTAGE.

FOR PREVENTION OF UTILITIES EASEMENT ADJACENT TO ALL DRIVEWAYS WITH UTILITY AND DRAINAGE EASEMENT FRONTAGE, MARK HAS ASSIGNED TO ALL INTERIOR LOT LINES SEE PAGE 2 OF 3.

15' UTILITIES EASEMENT

FOUND CONC. NON. WITH 30" OS SHELL OCT. 1974

EX 3/4" IRON PIPE SET PER "Geodimensions"

EX MONUMENT IN CASE BY "Geodimensions" DEER RUN DIVISION 2

NOTE ALL LOT CORNERS SET WITH 3/4" IRON PIPE AND 2" STAKE. A PK NAIL WAS SET IN THE TOP OF CURBING ON AN EXTENSION OF THE PROPERTY LINES FOR THE FRONT LOT CORNERS ON RIGHT OF WAY FRONTAGE.

FOR PREVENTION OF UTILITIES EASEMENT ADJACENT TO ALL DRIVEWAYS WITH UTILITY AND DRAINAGE EASEMENT FRONTAGE, MARK HAS ASSIGNED TO ALL INTERIOR LOT LINES SEE PAGE 2 OF 3.

15' UTILITIES EASEMENT

FOUND CONC. NON. WITH 30" OS SHELL OCT. 1974

EX 3/4" IRON PIPE SET PER "Geodimensions"

EX MONUMENT IN CASE BY "Geodimensions" DEER RUN DIVISION 2

NOTE ALL LOT CORNERS SET WITH 3/4" IRON PIPE AND 2" STAKE. A PK NAIL WAS SET IN THE TOP OF CURBING ON AN EXTENSION OF THE PROPERTY LINES FOR THE FRONT LOT CORNERS ON RIGHT OF WAY FRONTAGE.

FOR PREVENTION OF UTILITIES EASEMENT ADJACENT TO ALL DRIVEWAYS WITH UTILITY AND DRAINAGE EASEMENT FRONTAGE, MARK HAS ASSIGNED TO ALL INTERIOR LOT LINES SEE PAGE 2 OF 3.

NUMBER	DELTA	RADIUS	LENGTH
C1	32°20'15"	150.00"	84.86
C2	57°30'08"	120.18	120.61
C3	32°20'15"	149.63	84.45
C4	09°53'57"	125.00	21.59
C5	22°28'28"	125.00	41.99
C6	80°00'00"	25.00	39.27
C7	11°54'38"	169.63	35.26
C8	16°46'13"	169.63	48.65
C9	03°39'23"	169.63	10.83
C10	02°12'08"	50.00	1.92
C11	65°16'08"	50.00	57.29
C12	34°12'07"	50.00	47.30
C13	44°05'22"	50.00	36.48
C14	42°39'08"	50.00	37.22
C15	48°04'13"	50.00	41.95
C16	29°23'20"	50.00	25.65
C17	32°20'15"	129.63	73.16
C18	90°00'00"	25.00	39.27
C19	57°30'08"	85.18	95.52
C20	69°40'08"	25.00	39.13
C21	90°19'52"	25.00	39.41
C22	30°28'37"	25.00	13.30
C23	45°49'35"	50.00	38.25
C24	42°23'56"	50.00	37.00
C25	31°33'18"	50.00	27.54
C26	30°12'23"	25.00	13.18
C27	13°05'45"	175.00	40.00
C28	16°14'29"	175.00	54.77
C29	53°07'48"	25.00	23.16
C30	53°07'48"	25.00	23.16

NUMBER	DIRECTION	DISTANCE
R1	N 15°43'57" E	50.00'
R2	N 49°55'20" W	50.00'
R3	N 50°07'29" W	50.00'
R4	S 84°08'29" W	50.00'
R5	N 07°58'04" W	109.63'
R6	N 81°05'21" E	125.00'
R7	S 28°54'21" E	50.00'
R8	S 14°55'14" W	50.00'
R9	N 57°19'10" E	50.00'
R10	N 85°52'28" E	50.00'
R11	S 71°45'42" W	175.00'

LEGEND:

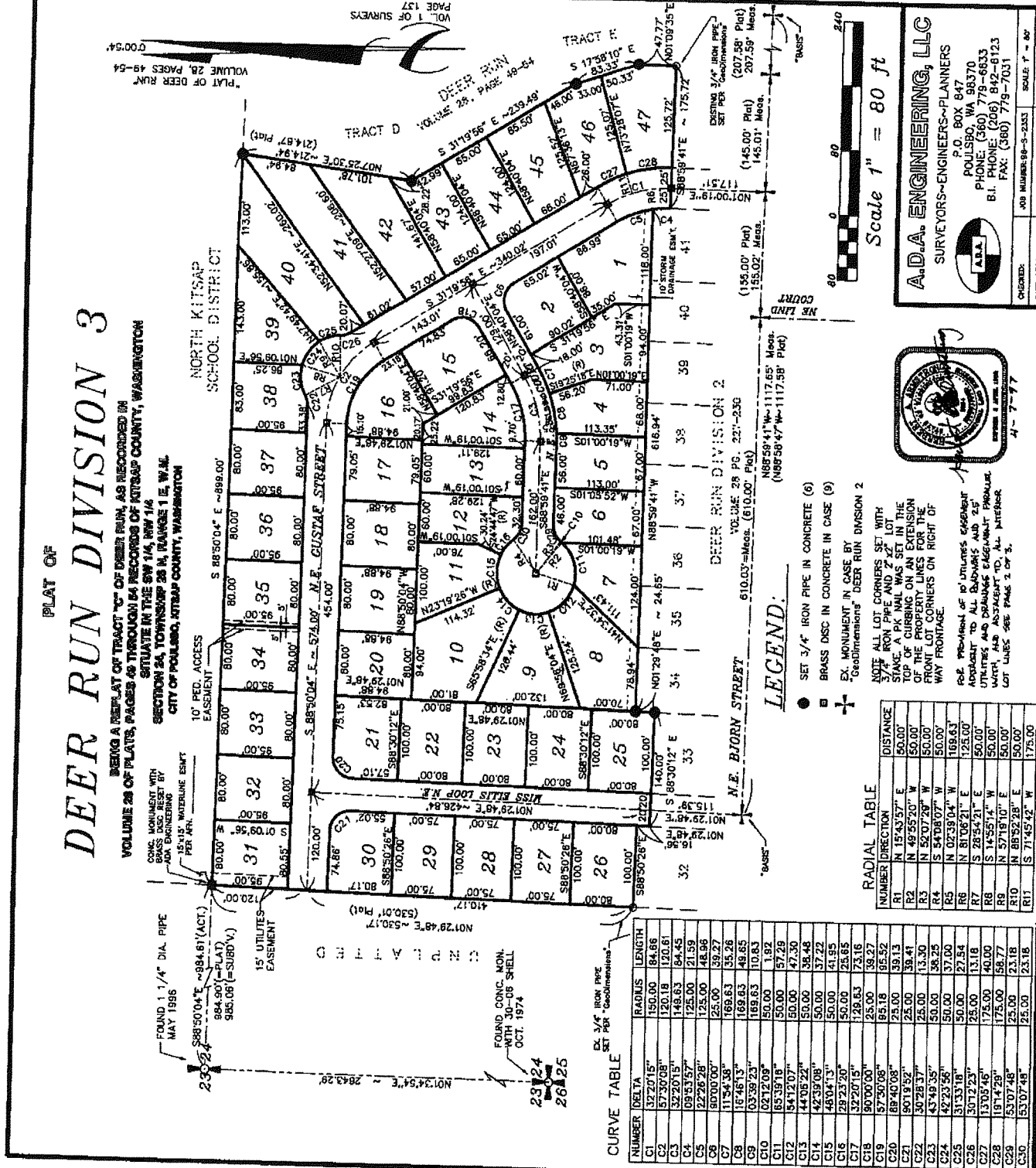
- SET 3/4" IRON PIPE IN CONCRETE (6)
- ⊠ BRASS DISC IN CONCRETE IN CASE (9)
- ⊕ EX. MONUMENT IN CASE BY "Geodimensions" DEER RUN DIVISION 2

NOTE ALL LOT CORNERS SET WITH 3/4" IRON PIPE AND 2" STAKE. A PK NAIL WAS SET IN THE TOP OF CURBING ON AN EXTENSION OF THE PROPERTY LINES FOR THE FRONT LOT CORNERS ON RIGHT OF WAY FRONTAGE.

FOR PREVENTION OF UTILITIES EASEMENT ADJACENT TO ALL DRIVEWAYS WITH UTILITY AND DRAINAGE EASEMENT FRONTAGE, MARK HAS ASSIGNED TO ALL INTERIOR LOT LINES SEE PAGE 2 OF 3.



A.D.A. ENGINEERING, LLC
 SURVEYORS-ENGINEERS-PLANNERS
 P.O. BOX 847
 POULSBORO, WA 98370
 PHONE: (360) 779-6833
 B.I. PHONE: (206) 842-6123
 FAX: (360) 779-7031



VOLUME 28, PAGES 49-54
 PLAT OF DEER RUN
 VOL. OF SURVEYS
 PAGE 137

DATE SEPT. 1998
 FILE NO. PLACING
 SHEET 3 OF 3

Var-P203 PLAT 301923 2/15